

2019

TRANSPORTATION MANAGEMENT INSIGHTS

We surveyed 100 transportation management professionals to hear about the challenges and the trends they're expecting over the next two years...

HERE'S WHAT THEY SAID

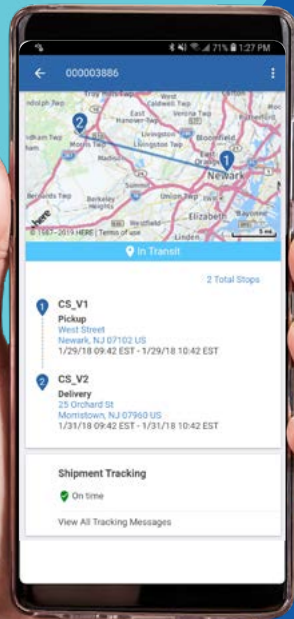
WHAT IS THE MOST IMPORTANT CAPABILITY OF A TMS?



57% OF ALL RESPONDENTS SAID
**TRANSPORTATION
PLANNING**



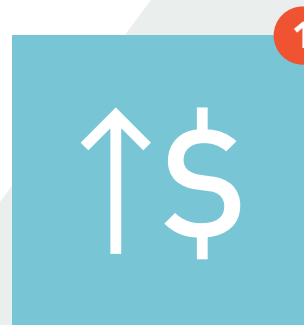
60% OF EXECUTIVES SAID
**TRANSPORTATION
OPTIMIZATION**



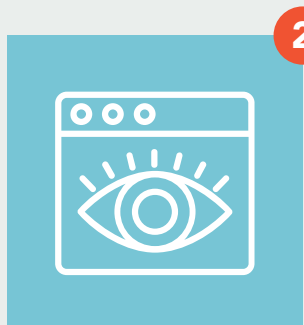
75% OF ALL
RESPONDENTS SAID
REAL-TIME VISIBILITY
is very important to their business

BIGGEST CHALLENGES

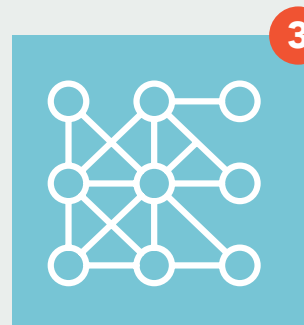
ALL RESPONDENTS



**INCREASED
COSTS**

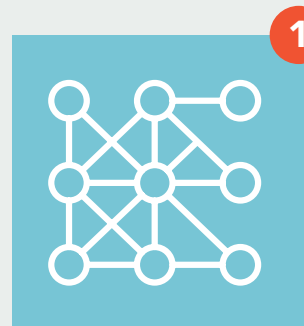


**REAL-TIME
VISIBILITY**

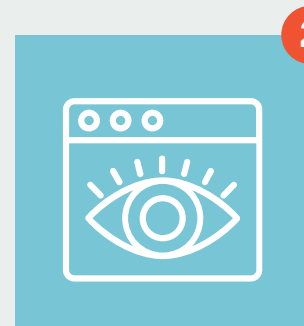


**TRANSPORTATION
OPTIMIZATION**

EXECUTIVES



**TRANSPORTATION
OPTIMIZATION**



**REAL-TIME
VISIBILITY**



**TRANSPORTATION
PLANNING**

/ STRATEGIC ANALYSIS / PROCUREMENT / OPERATIONAL PLANNING
/ EXECUTION / VISIBILITY / FREIGHT PAYMENT AND CLAIMS

Our easy-to-use solution helps reduce transportation costs, improve service levels and lower operational risk.

Learn more about Manhattan TMS
manh.com/tms